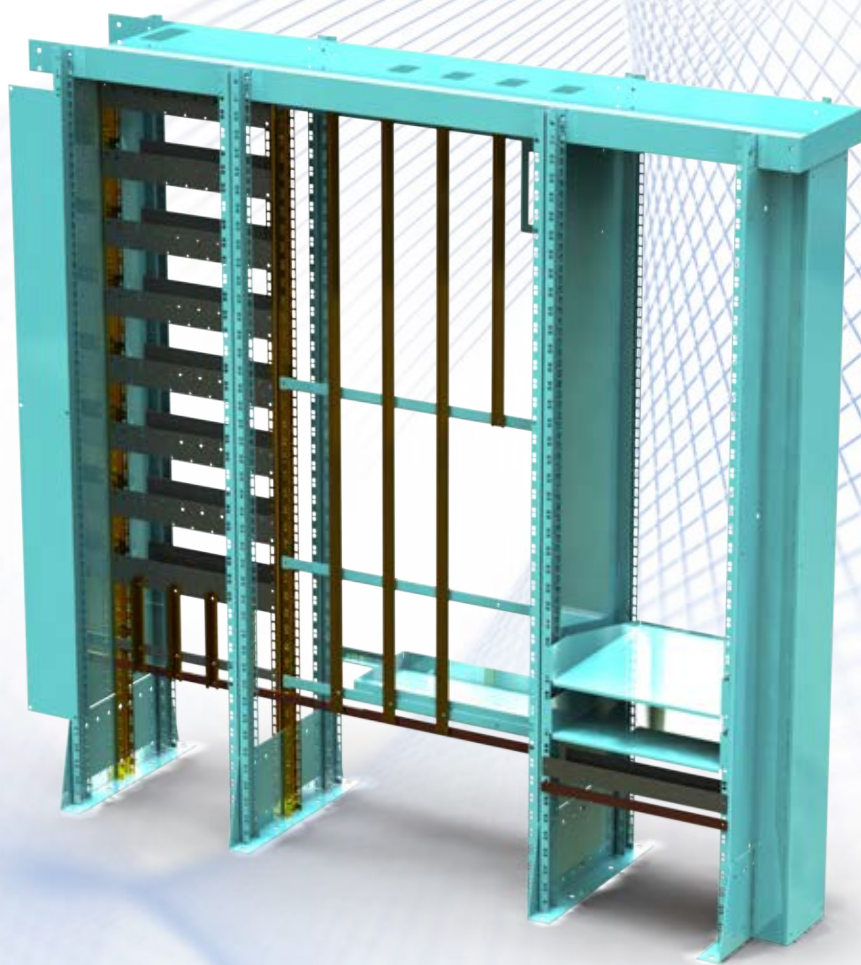


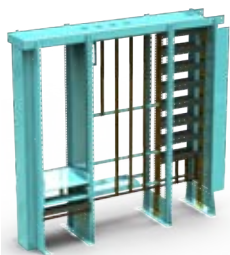
# MILSPEC Racking



*Milspec*  
MANUFACTURING

SUBSYSTEMS MANUFACTURER TO DEFENCE AND INDUSTRIES

# MILSPEC Racking



Milspec have been designing and supplying enclosures to rail and industry for over 15 years. Their product range has been specifically designed for the rail and outdoor industry requirements, meeting VRIOGS and ASA requirements. The Milspec range of cabinets are available, with racking to suit, in an off the shelf design or can be customised to your needs.





## Two Core Options

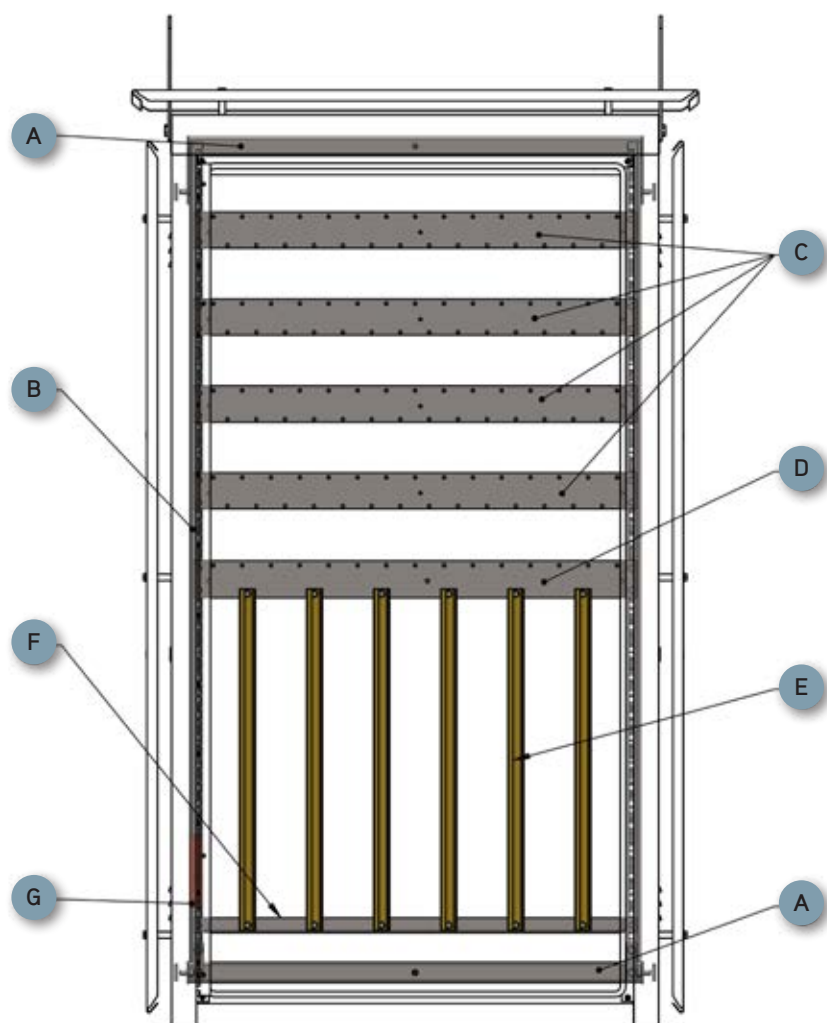
- Cabinet Footprint
- Standalone / Bungalow Footprint


## Standard Footprint


With our standard range we offer single or double width frames. The table below will guide you through which frame will fit your selected Milspec indoor or outdoor enclosure.

After selecting the required frame, you can customise the racking configuration by selecting from a range of accessories to achieve your desired racking configuration.

Family	Product
A	Unistrut
B	Vertical MTG Rail
C	Q Relay Rails
D	Relay / Termination Rail
E	G Rail / DIN Rail vertical component mounting rail
F	Termination Angle
G	Earth Bar
H	Rack Accessories



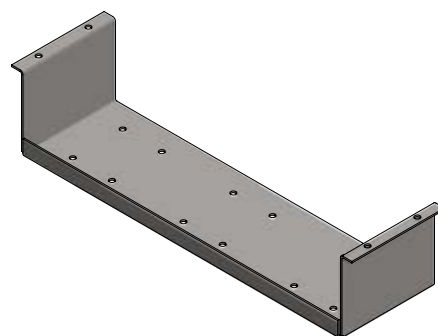
<b>A</b>	<b>Unistrut</b>	This spans between side wall unistrut (already installed in your Milspec Cabinet.) 2 Required (i.e. top/bottom) double quantity if rear mounting points are required (for shelving etc.)	
Description		Part Number	
To Suit Single width Cabinet (S/S)		M01971	
To Suit Single width Cabinet (Aluminium)		M02058	
To Suit Double Width Cabinet(S/S) OR (Aluminium)		M01873	

<b>B</b>	<b>Vertical MTG Rail</b>	Required for Cabinet racking only. For cabinet racking use 2A rail. Bay widths can be 19", 21", 6Q, 7Q, 14Q, 15Q etc. Driven by qty of bays i.e. 2 x Rail per bay. Double quantity if rear mounting is required.	
Description		Part Number	
2A Rail – With RU and IEC 25mm spacing		D2495M	

C	Q Relay Rails	Required for Cabinet and Standalone / Bungalow Racking. If no Q relays are required in this Bay, then go to 'Family F.' One Q Relay rail required per row of Q Relays.
Description		Part Number
6Q - Relay Rail MTG for Q relay top and bottom		M03941
7Q - Relay Rail MTG for Q relay top and bottom		D7828/28
14Q - Relay Rail MTG for Q relay top and bottom		M03714
15Q - Relay Rail MTG for Q relay top and bottom		M03948
Clean and Dirty Wiring		
15Q - Termination Rail Assy (5 Rows 5 x CD)		M07975
6Q - Termination Rail (2 Rows 2 x CD)		M07971
15Q - Termination Rail Assy (5 Rows 3 x CD LHS)		M07972
15Q - Termination Rail Assy (5 Rows 3 x CD RHS)		M07974
14Q - Relay Rail Assy, 30"		M10234
15Q - Term Rail Assy - No Row Holes		M10191
15Q - Bottom Termination Rail (5TERMS)		M10173
6Q - Relay Assembly (4TERMS)		M10175
14Q - Hybrid Rail (5Q + 19") 6 Rails		M08145
19 Inch Cable Tray		D4597
Mounting Panel - Includes 14Q Rail and 6 TERMS		M07015

<b>D</b>	<b>Relay / Termination Rail</b>	Required for Cabinet and Standalone / Bungalow Racking. Based on Q Width, and No of G / DIN rail termination points. 1 Per Bay Maximum.		
Description		Part Number	Cable Entries	Cable Entry Diameter
6Q - MTG for Q relays at top MTG for Din / G rail at bottom 2 Terminations		M04244	2	74mm
6Q - MTG for Q relays at top MTG for Din / G rail at bottom 3 Terminations		M03944	3	52mm
7Q - MTG for Q relays at top MTG for Din / G rail at bottom 3 Terminations		M04248	7	38mm

7Q - MTG for Q relays at top MTG for Din / G rail at bottom 3 Terminations	M04986	3	52mm
7Q - MTG for Q relays at top MTG for Din / G rail at bottom 4 Terminations	D7829/28	4	52mm
14Q - MTG for Q relays at top MTG for Din / G rail at bottom 6 Terminations	M04331	6	74mm
14Q - MTG for Q relays at top MTG for Din / G rail at bottom 7 Terminations	M04640	7	52mm
14Q - MTG for Q relays at top MTG for Din / G rail at bottom 8 Terminations	M03717	8	52mm
15Q - MTG for Q relays at top MTG for Din / G rail at bottom 6 Terminations	M04252	6	74mm
15Q - MTG for Q relays at top MTG for Din / G rail at bottom 7 Terminations	M06260	7	74mm
15Q - MTG for Q relays at top MTG for Din / G rail at bottom 8 Terminations	M03951	8	52mm
UPS Racking - Q relay rail	M10390	NIL	NIL



<b>E</b>	<b>G Rail / DIN Rail vertical component mounting rail</b>	<p>Required for Cabinet and Standalone / Bungalow Racking. Select Length Based of Rows of Q Relays. Rows 0 = Full Height Rows 1 - 2 = Three Quarter Height Rows 3 - 4 = Half Height Rows 5 - 6 = Quarter Height Based on Termination points in Family D</p>
----------	---	---

Description	Part Number
G Rail - Quarter Height (420mm long)	M04929
G Rail - Half Height (820mm long)	M04930
G Rail - Three Quarter Height (1220mm long)	M04931
G Rail - Full Height (1620mm long)	M04932
DIN Rail - Quarter Height (420mm long)	M04933
DIN Rail - Half Height (820mm long)	M04934
DIN Rail - Three Quarter Height (1220mm long)	M04935
DIN Rail - Full Height (1620mm long)	M04936




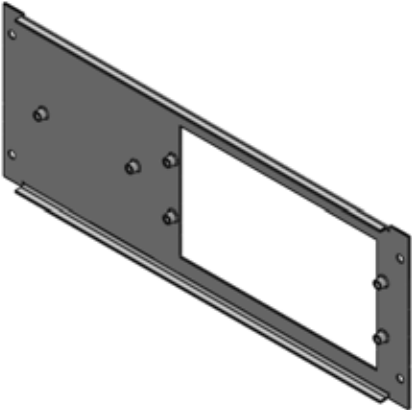
<b>F</b>	<b>Termination Angle</b>	<p>Required for Cabinet and Standalone / Bungalow Racking mounting of bottom of G / DIN Rail Based only on Width of Bay i.e. 6Q, 7Q, 14Q or 15Q. If Q relays are present in Bay then 1 only per bay. This can also be substituted for Termination Rail at top of bay if Q relays are not required in Bay.</p>
----------	--------------------------	---

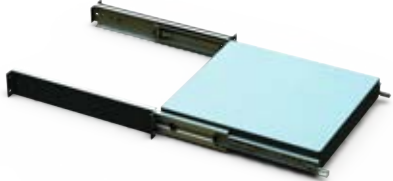
Description	Part Number
6Q - 2 Terminations	M04247
6Q - 3 Terminations	M03947
6Q - 6 Terminations	M04352
7Q - 3 Terminations	M04251
7Q - 4 Terminations	D7830B
14Q - 6 Terminations	M04329
14Q - 7 Terminations	M04641
14Q - 8 Terminations	M03932



15Q - 6 Terminations	M04255	
15Q - 7 Terminations	M06261	
15Q - 8 Terminations	M03954	
15Q - Termination Rail Assembly (5TERMS)	M10170	
6Q bottom - Bottom Termination Rail Assembly (4TERMS - uneven)	M10199	
15Q - Bottom Termination Rail (0TERMS)	M10174	

<b>G</b> Earth Bar		Required for Cabinet and Standalone / Bungalow Racking. Terminates the bottom of the upright G/ DIN rail. This can also be substituted for Termination Rail at top of bay if Q relays are not required in Bay. 1 required per bay.
Description	Part Number	
Universal Earth Block - 12 Terminations	BPAHE12	
Universal Earth Block - 24 Terminations	BPAHE24	
6Q - Copper Earth Bar	M04941	
7Q - Copper Earth Bar	M04942	
14Q - Copper Earth Bar	M04943	
15Q - Copper Earth Bar	M04944	

<b>H</b> Rack Accessories		Required for Cabinet and Standalone / Bungalow Racking.
Description	Part Number	
Fixed shelf, 19" MTG, adj mounts, light duty	D6675	
Sliding shelf, 19" MTG, light duty	D6672	
Shelf, fixed, heavy duty, 19" MTG, 1RU, fixed	M03666	
Shelf, fixed, heavy duty	D2567DMZ	
Shelf, fixed, light duty	D7004	
Shelf, fixed, light duty	M01773	
Laptop shelf, 2RU, light duty, 19" MTG,	M02835	
Shelf, battery charger, fixed, 19" MTG	M04901	
Battery Shelf, Fixed. 14Q Mounted, 100kg Rated	M04384	
Battery Shelf, Fixed. 857w x 340h	M04386	
Frauscher FDS Mounting Panel, 19"	M09337	
Electrologics Mounting Panel 485mm x 500mm	M08570	
1Q Blanking Plate	M08177	
2Q Blanking Plate	M08178	

3Q Blanking Plate	M08179	
Rear of Cabinet Cable Hoop 285mm Wide	M10178	
Description	Part Number	
Heavy Duty Shelf (sliding) Sliding, 19" MTG, 402W x 450D x 40H, 227kg rating.	M02775	
Heavy Duty Tray (sliding) Specs above Except shelf is flipped and becomes a tray.	M04397	
Heavy Duty Shelf-Modified (sliding) Sliding, 19" MTG, 402W x 450D x 40H, 227kg rating, Mod=15mm front and rear folds.	M04398	
Single Mounted, Sliding Shelf (mounts via 2 x equipment rails)	M06171	